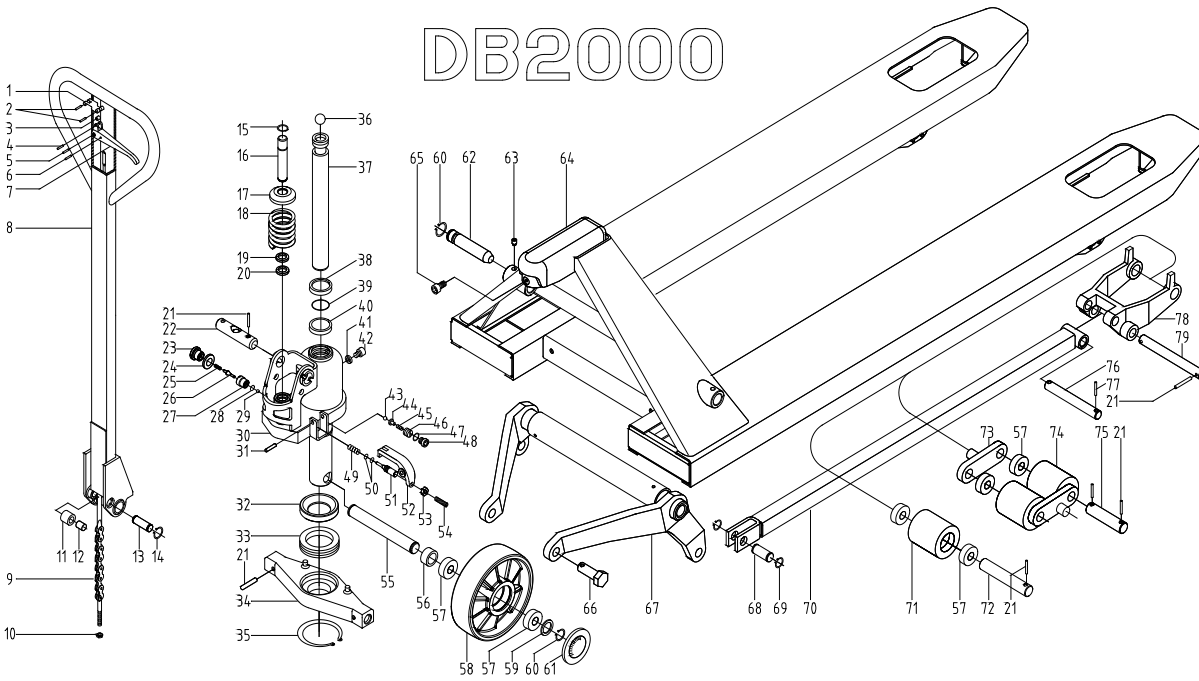


# DB Hand pallet Truck

## DB2000

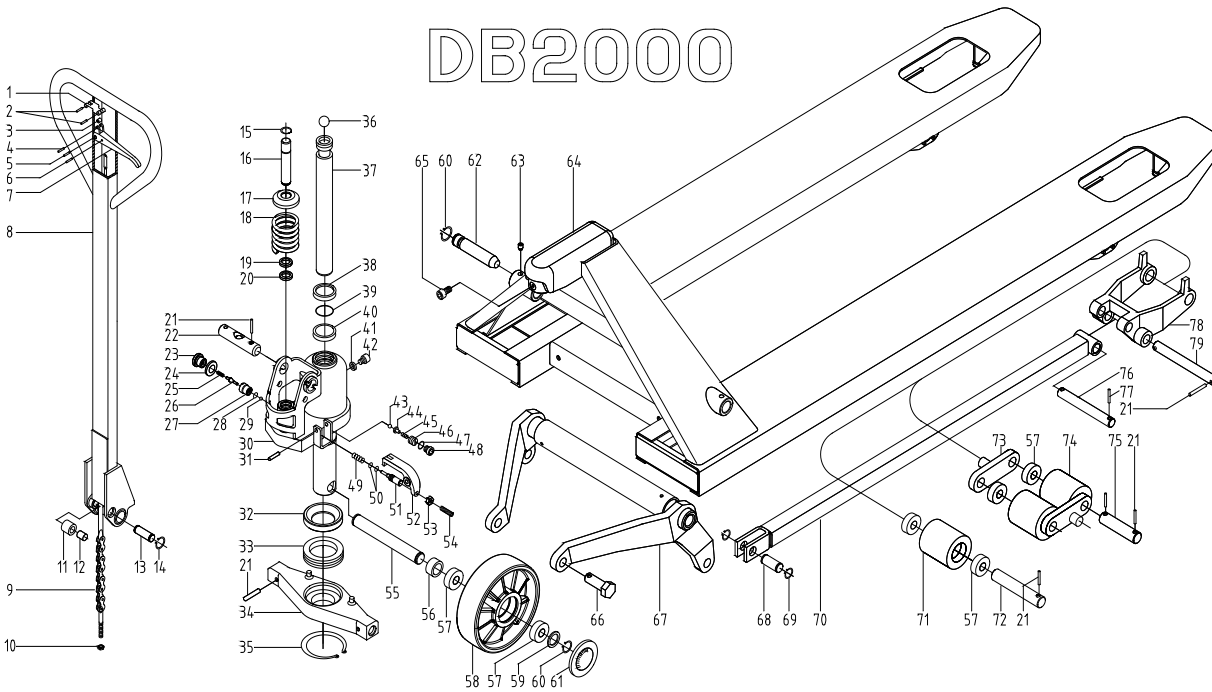


| No. | Name                |
|-----|---------------------|
| 1   | Locating plate      |
| 2   | Spring pin 4X30     |
| 3   | Roller              |
| 4   | Spring pin 4X20     |
| 5   | Spring pin 6X30     |
| 6   | Spring pin 4X15     |
| 7   | Hand knob           |
| 8   | Handle body         |
| 9   | Pull rod unit       |
| 10  | Lock nut M5         |
| 11  | Pressure wheel      |
| 12  | Bush 12X14X20       |
| 13  | Shaft 12X52         |
| 14  | Circlip for axle 12 |
| 15  | Circlip for axle 16 |
| 16  | Pump core 16X84     |
| 17  | Spring cap 16X42    |
| 18  | Big spring          |
| 19  | Dust ring 16X24X6   |
| 20  | Seal ring 16X22X5   |
| 21  | Spring pin 5X28     |
| 22  | Shaft               |
| 23  | Seal bolt M16X1.5   |
| 24  | Combined washer 16  |
| 25  | Spring              |

| No. | Name                 |
|-----|----------------------|
| 26  | Spindle of valve     |
| 27  | Seat of valve        |
| 28  | O ring 10.6X1.8      |
| 29  | Ball 7               |
| 30  | Base unit            |
| 31  | Spring pin 6X30      |
| 32  | Washer ring 40X67X12 |
| 33  | Bearing 51108        |
| 34  | Support base         |
| 35  | Circlip for axle 40  |
| 36  | Ball 3/4             |
| 37  | Piston 28X263        |
| 38  | Dust ring 28X36X6    |
| 39  | O ring 28X3.55       |
| 40  | Seal ring 28X35.5X5  |
| 41  | O ring 7.5X2.65      |
| 42  | Plug M8X1            |
| 43  | Ball 5               |
| 44  | Seat of ball         |
| 45  | Spring               |
| 46  | Plug                 |
| 47  | Combined washer 10   |
| 48  | Plug M10X1           |
| 49  | Spring               |
| 50  | O ring 6.9X1.8       |

# DB Hand pallet Truck

## DB2000



| No. | Name                 |
|-----|----------------------|
| 51  | Firing pin           |
| 52  | Lever board          |
| 53  | Nut 6                |
| 54  | Bolt M6X25           |
| 55  | Shaft 20X158         |
| 56  | Washer 26.8X21X8     |
| 57  | Bearing 6204         |
| 58  | Big wheel-PU         |
|     | Big wheel-Nylon      |
| 59  | Washer               |
| 60  | Circlip for axle 20  |
| 61  | Dust-proof cover     |
| 62  | Shaft 20X100         |
| 63  | Bolt M8X10           |
| 64  | Truck frame assembly |
| 65  | Bolt                 |
| 66  | Shaft                |
| 67  | Rock arm             |
| 68  | Shaft                |
| 69  | Circlip for axle     |
| 70  | Pitman               |
| 71  | Wheel 80X70-PU       |
|     | Wheel-Nylon          |
| 72  | Shaft                |
| 73  | Bracket plate        |

| No. | Name           |
|-----|----------------|
| 74  | Wheel 80X70-PU |
|     | Wheel-Nylon    |
| 75  | Shaft          |
| 76  | Shaft          |
| 77  | Spring pin     |
| 78  | Wheel frame    |
| 79  | Shaft          |